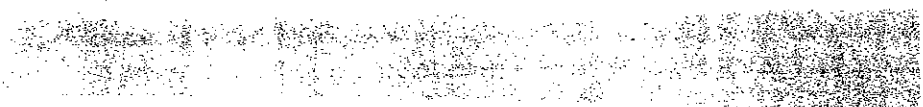
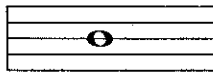
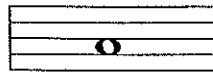
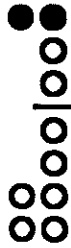


**The Complete
Recorder
Resource Kit
Student Book**





B



A



G



1. Just B

4 bar intro

B B B B B

2. Just A

4 bar intro

A A A A

3. A and B

2 bar intro

B A

4. Just G

2 bar intro

G

5. G and A

2 bar intro

6. B, A and G

4 bar intro

7. Ramble

4 bar intro

Musical notation for 'Ramble' in treble clef, C major, 4/4 time. The first staff contains a 4-bar introduction: G4 (quarter), A4 (quarter), B4 (quarter), C5 (half). The second staff contains the main melody: G4 (quarter), A4 (quarter), B4 (quarter), C5 (quarter), D5 (quarter), E5 (quarter), F5 (quarter), G5 (quarter), F5 (quarter), E5 (quarter), D5 (quarter), C5 (half).

8. Trippin

4 bar intro

Musical notation for 'Trippin' in treble clef, C major, 4/4 time. The first staff contains a 4-bar introduction: G4 (quarter), A4 (quarter), B4 (quarter), C5 (half). The second staff contains the main melody: G4 (quarter), A4 (quarter), B4 (quarter), C5 (quarter), D5 (quarter), E5 (quarter), F5 (quarter), G5 (quarter), F5 (quarter), E5 (quarter), D5 (quarter), C5 (half).

9. Hot Cross Buns

4 bar intro

Musical notation for 'Hot Cross Buns' in treble clef, C major, 4/4 time. The first staff contains a 4-bar introduction: G4 (quarter), A4 (quarter), B4 (quarter), C5 (half). The second staff contains the main melody: G4 (quarter), A4 (quarter), B4 (quarter), C5 (quarter), D5 (quarter), E5 (quarter), F5 (quarter), G5 (quarter), F5 (quarter), E5 (quarter), D5 (quarter), C5 (half). Lyrics are written below the notes.

Hot cross buns. Hot cross buns.
One a pen - ny two a pen - ny Hot cross buns

10. Mary Had A Little Lamb

4 bar intro

Musical notation for 'Mary Had A Little Lamb' in treble clef, C major, 4/4 time. The first staff contains a 4-bar introduction: G4 (quarter), A4 (quarter), B4 (quarter), C5 (half). The second staff contains the main melody: G4 (quarter), A4 (quarter), B4 (quarter), C5 (quarter), D5 (quarter), E5 (quarter), F5 (quarter), G5 (quarter), F5 (quarter), E5 (quarter), D5 (quarter), C5 (half). Lyrics are written below the notes.

Ma - ry had a lit - tle lamb lit - tle lamb lit - tle lamb
Ma - ry had a lit - tle lamb. Fleece were white as snow.

11. Side Step

4 bar intro

Musical notation for 'Side Step' in G major, 4/4 time. The piece consists of two staves. The first staff has a treble clef and a key signature of one sharp (F#). The melody is: G4 (quarter), A4 (quarter), B4 (quarter), A4 (quarter), G4 (quarter), F#4 (quarter), E4 (half). The second staff has a bass clef and a key signature of one sharp (F#). The bass line is: G3 (quarter), A3 (quarter), B3 (quarter), A3 (quarter), G3 (quarter), F#3 (quarter), E3 (half).

12. Skippin

2 bar intro

Musical notation for 'Skippin' in G major, 4/4 time. The piece consists of two staves. The first staff has a treble clef and a key signature of one sharp (F#). The melody is: G4 (quarter), A4 (quarter), B4 (quarter), A4 (quarter), G4 (quarter), F#4 (quarter), E4 (half). The second staff has a bass clef and a key signature of one sharp (F#). The bass line is: G3 (quarter), A3 (quarter), B3 (quarter), A3 (quarter), G3 (quarter), F#3 (quarter), E3 (half).

13. au Claire de la Lune

2 bar intro

Musical notation for 'au Claire de la Lune' in G major, 4/4 time. The piece consists of two staves. The first staff has a treble clef and a key signature of one sharp (F#). The melody is: G4 (quarter), A4 (quarter), B4 (quarter), A4 (quarter), G4 (quarter), F#4 (quarter), E4 (half). The second staff has a bass clef and a key signature of one sharp (F#). The bass line is: G3 (quarter), A3 (quarter), B3 (quarter), A3 (quarter), G3 (quarter), F#3 (quarter), E3 (half).

Au claire de la lu - ne Mon a - mi Pier - rot
Pre - tes moi ta plu - me pour e - crire un mot.

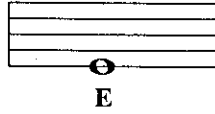
14. Go Tell Aunt Rhody

4 bar intro

Musical notation for 'Go Tell Aunt Rhody' in G major, 4/4 time. The piece consists of two staves. The first staff has a treble clef and a key signature of one sharp (F#). The melody is: G4 (quarter), A4 (quarter), B4 (quarter), A4 (quarter), G4 (quarter), F#4 (quarter), E4 (half). The second staff has a bass clef and a key signature of one sharp (F#). The bass line is: G3 (quarter), A3 (quarter), B3 (quarter), A3 (quarter), G3 (quarter), F#3 (quarter), E3 (half).

Go tell Aunt Rho - dy Go tell Aunt Rho - dy
Go tell Aunt Rho - dy the old grey goose is dead.

NEW NOTE!



15. Rain Rain

2 bar intro

Rain rain go a - way Come a - gain a - no - ther day.

Musical notation for the song 'Rain Rain' in treble clef. It consists of two lines of music. The first line has a 2-bar introduction. The lyrics are: 'Rain rain go a - way Come a - gain a - no - ther day.'

16. Starlight

4 bar intro

Star - light Star bright First star I see to - night
Wish I may Wish I might Have the wish I wish to - night

Musical notation for the song 'Starlight' in treble clef. It consists of two lines of music. The first line has a 4-bar introduction. The lyrics are: 'Star - light Star bright First star I see to - night' and 'Wish I may Wish I might Have the wish I wish to - night'.

17. Cuckoo

Class: Solo: Not on accompaniment tape

Cuck - oo Where are you? Cu - ckoo

Musical notation for the song 'Cuckoo' in treble clef. It consists of two lines of music. The first line is labeled 'Class:' and the second line is labeled 'Solo: Not on accompaniment tape'. The lyrics are: 'Cuck - oo Where are you? Cu - ckoo'.

18. Skin and Bones

4 bar intro

Was an old wo - man all skin and bones
OOO - OOO - OO - OOO!

Musical notation for the song 'Skin and Bones' in treble clef. It consists of two lines of music. The first line has a 4-bar introduction. The lyrics are: 'Was an old wo - man all skin and bones' and 'OOO - OOO - OO - OOO!'.

19. Snail Snail

4 bar intro

Snail snail snail snail go a - round and round and round.

20. Doggie Doggie

4 bar intro

Dog gie dog - gie where's your bone? Some - one stole it from your home.

Solo 1: Solo 2:

Who has my bo - ne I have your bo - ne

21. Lucy Locket

4 bar intro

Lu cy Lock - et lost her pock - et Kit - ty Fisch - er found it

Not a pen - ny was there in it On - ly rib - bon round it

22. Long Legged Sailor

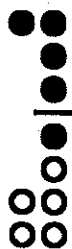
2 bar intro

Did you ever ever ever in your long legged life see a long legged sailor with a

long legged wife? No I never ever ever in my

long legged life seen a long legged sailor with a long legged wife!

NEW NOTE!

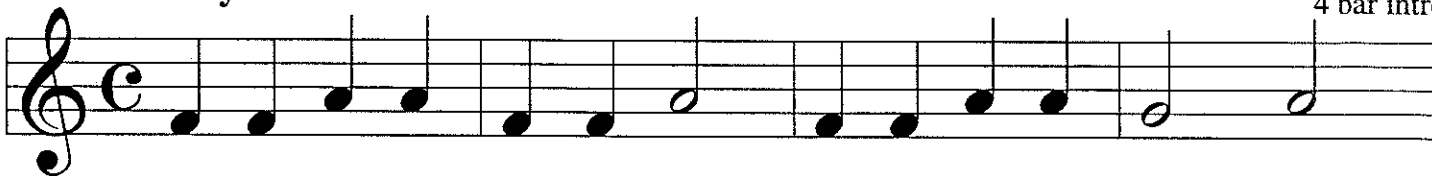


or



23. Closet Key

4 bar intro



I have lost my clo - set key in my la - dies gar - den



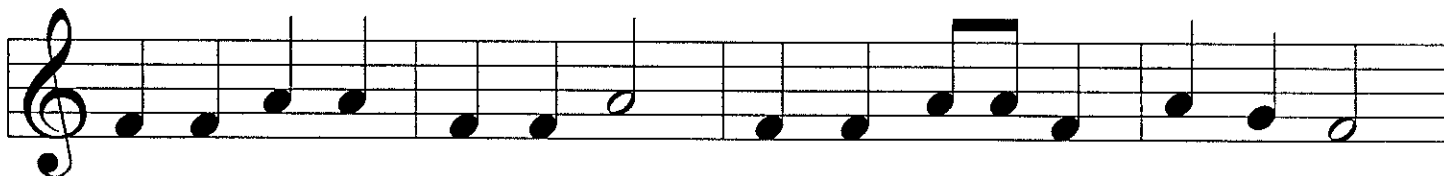
I have lost my clo - set key in my la - dies gar - den.

24. Grandma Grunts

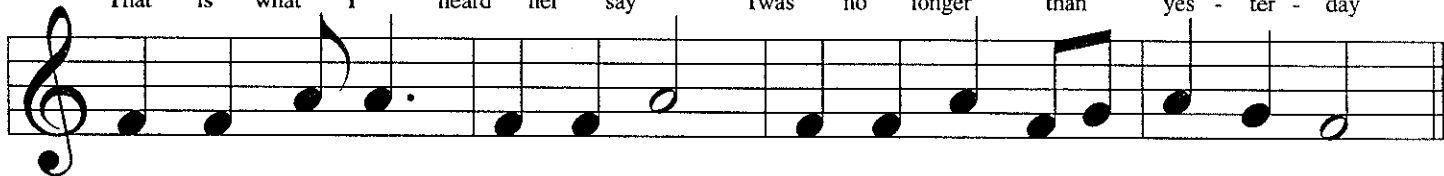
4 bar intro



Grand - ma Grunts said a cur - ious thing Boys can whistle but girls must sing



That is what I heard her say Twas no longer than yes - ter - day



Boys can whis - tle Girls must sing tra - la - la la - la

25. Down by the Station

4 bar intro

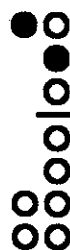
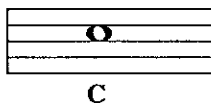


Down by the Sta - tion Ear - ly in the morn - ing



See the lit - tle puff - er - bel - lies all in a row.

NEW NOTE!



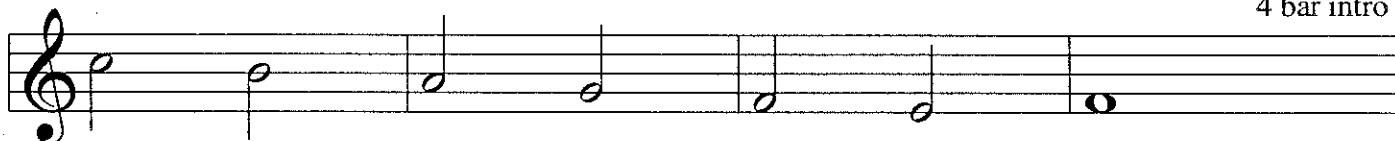
26. Just C

2 bar intro



27. All Our Notes

4 bar intro



28. Who's That?

2 bar intro



29. Hush Little Baby

4 bar intro



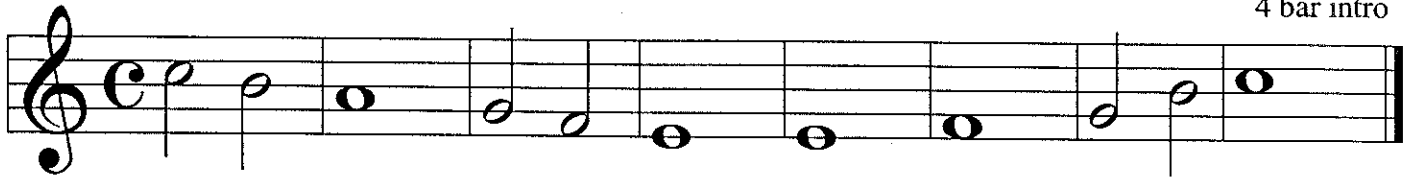
Hush lit-tle ba - by don't say a word, Ma-ma's gon-na' buy you a mock-ing bird.



If that mock-ing bird don't sing, Ma-ma's gon-na' buy you a dia-mond ring.

30. Note Review

4 bar intro



31. Old Blue

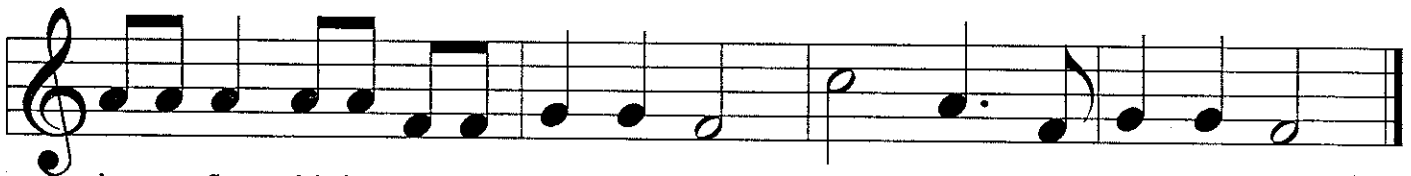
4 bar intro



I had a dog and his name was Blue. I had a dog and his



name was Blue. I had a dog and his name was blue and I

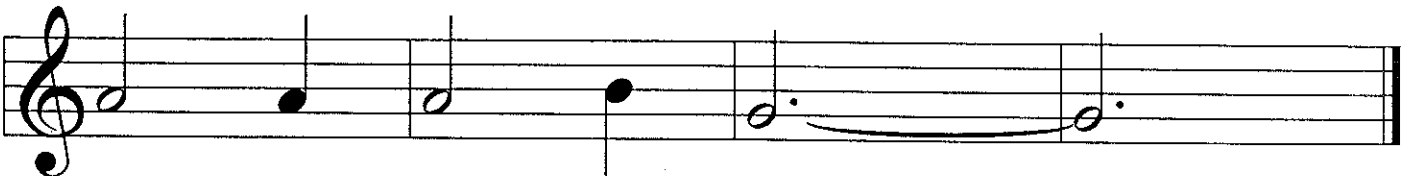


bet you five dol-lars he's a good dog too. Here Blue, you good dog you.

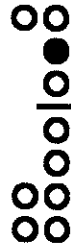
32. Sanctus

by Franz Schubert

4 bar intro



NEW NOTE!



33. Just D

A single musical staff in treble clef, common time (C). It contains a sequence of notes: D4, E4, F4, G4, A4, B4, C5, B4, A4, G4, F4, E4, D4. The first two bars are marked as a 2 bar intro.

34. Practise All Our Notes

A single musical staff in treble clef, common time (C). It contains a sequence of notes: D4, E4, F4, G4, A4, B4, C5, B4, A4, G4, F4, E4, D4. The first four bars are marked as a 4 bar intro.

35. Jesu Joy of Man's Desiring

By Johann Sebastian Bach

Two musical staves in treble clef, 3/4 time. The first staff contains the notes: D4, E4, F4, G4, A4, B4, C5, B4, A4, G4, F4, E4, D4. The second staff contains the notes: D4, E4, F4, G4, A4, B4, C5, B4, A4, G4, F4, E4, D4. The first eight bars are marked as an 8 bar intro.

36. Lightly Row

Four musical staves in treble clef, common time (C). The first staff contains the notes: D4, E4, F4, G4, A4, B4, C5, B4, A4, G4, F4, E4, D4. The second staff contains the notes: D4, E4, F4, G4, A4, B4, C5, B4, A4, G4, F4, E4, D4. The third staff contains the notes: D4, E4, F4, G4, A4, B4, C5, B4, A4, G4, F4, E4, D4. The fourth staff contains the notes: D4, E4, F4, G4, A4, B4, C5, B4, A4, G4, F4, E4, D4. The first four bars are marked as a 4 bar intro.

37. Rocky Mountain

2 bar intro

Rock y Moun - tain Rock - y Moun - tain Rock - y Moun - tain high.

When you're on that rock - y moun - tain hang your head and cry.

Do do do do do re - mem - ber me,

do do do do do re - mem - ber me.

38. Sweetly Sings the Donkey

3 bar intro

Sweet ly sings the don - key at the break of day.

**
If you do not feed him, this is what he'll say. Hee

**
Haw Hee Haw Hee Haw Hee Haw Hee Haw!

39. Morning

4 bar intro

Musical staff 1 for Morning, 3/4 time signature.

Musical staff 2 for Morning.

Musical staff 3 for Morning.

Musical staff 4 for Morning.

40. Oh When The Saints

Oh when the Saints go march - ing in

Oh when the Saints go march - ing in

How I want, to be in that num - ber

When the Saints go march - ing in.

Detailed description: This block contains four staves of musical notation for the hymn 'Oh When The Saints'. Each staff is in treble clef with a common time signature. The lyrics are written below the notes. The first staff has a fermata over the final note. The second staff has a fermata over the final note. The third staff has a fermata over the final note. The fourth staff has a fermata over the final note.

41. Shortnin' Bread

4 bar intro

Mama's little baby loves short - nin short - nin Mama's little baby loves short - nin bread

Mama's little baby loves short - nin short - nin Mama's little baby loves short - nin bread

Detailed description: This block contains two staves of musical notation for the hymn 'Shortnin' Bread'. Each staff is in treble clef with a common time signature. The lyrics are written below the notes. The first staff has a 4 bar intro. The second staff has a 4 bar intro.

42. Frere Jacques

2 bar intro

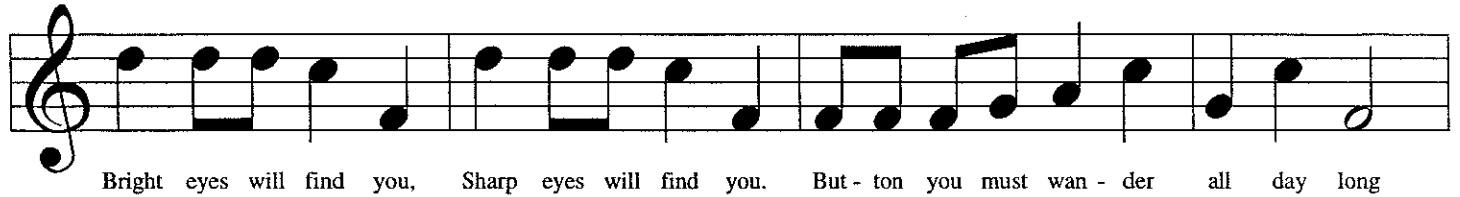
Fre - re Jac - ques Fre - re Jac - ques Dor - mez vous? Dor - mez vous?

Sonnez les ma - ti - nes Sonnez les ma - ti - nes Din Dan Don Din Dan Don

Detailed description: This block contains two staves of musical notation for the hymn 'Frere Jacques'. Each staff is in treble clef with a common time signature. The lyrics are written below the notes. The first staff has a 2 bar intro. The second staff has a 2 bar intro. There are double asterisks (**) above the first and second measures of the second staff.

43. Button You Must Wander

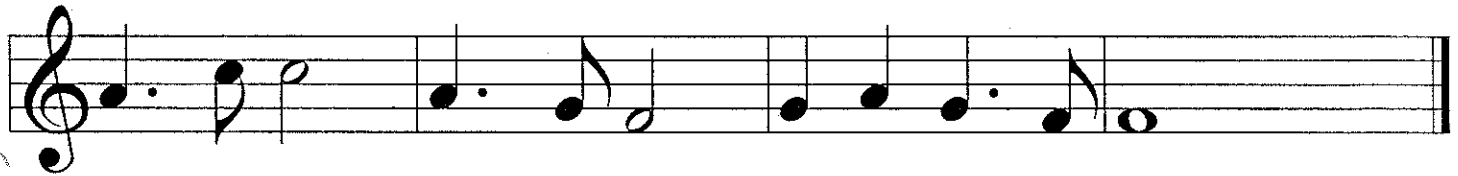
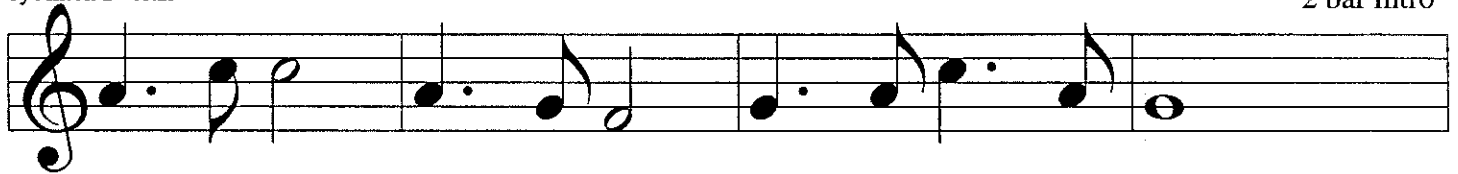
2 bar intro



44. New World Symphony

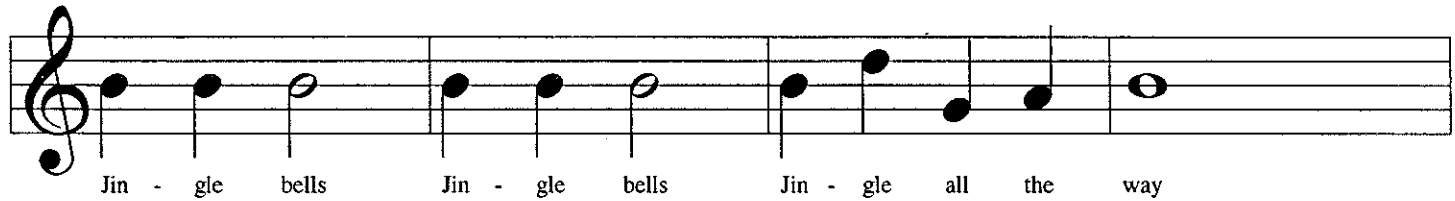
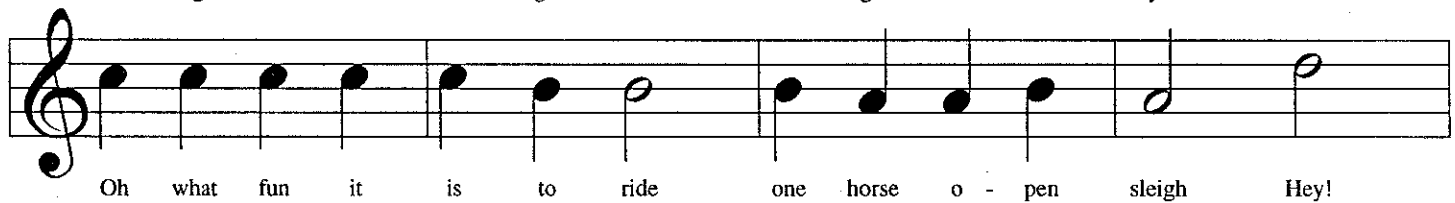
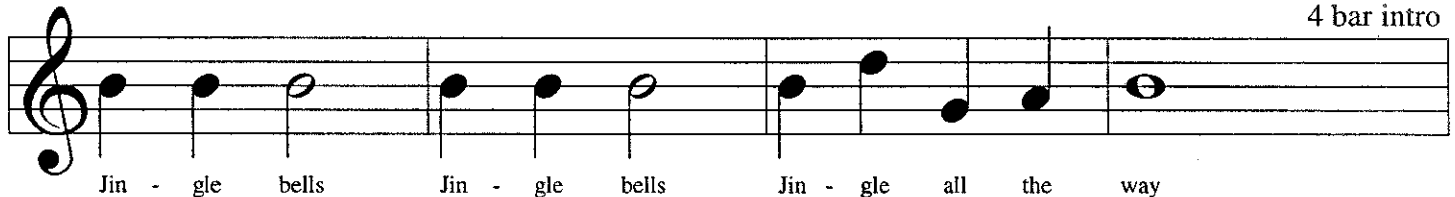
by Anton Dvorak

2 bar intro



45. Jingle Bells

4 bar intro



46. Good King Wenceslas

4 bar intro

Good King Wen - ces - las looked out on the feast of Ste - phen
When the snow lay round a - bout deep and crisp and e - ven

The musical notation for 'Good King Wenceslas' consists of two staves of music in C major and 4/4 time. The first staff contains the melody for the first line of lyrics, and the second staff contains the melody for the second line. The melody is simple and uses mostly quarter and eighth notes.

47. Up on a Housetop

4 bar intro

Up on a house top rein - deer pause Out jumps good old San - ta Claus
Down thru the chimney lots of toys All for the little ones Christ - mas joys.

The musical notation for 'Up on a Housetop' consists of two staves of music in C major and 4/4 time. The first staff contains the melody for the first line of lyrics, and the second staff contains the melody for the second line. The melody is simple and uses mostly quarter and eighth notes.

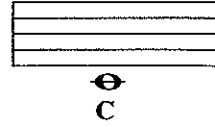
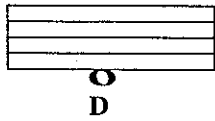
48. Ode to Joy

by Ludwig van Beethoven

5 bar intro

The musical notation for 'Ode to Joy' consists of four staves of music in C major and 4/4 time. The melody is more complex than the previous two songs, featuring eighth and sixteenth notes. The first staff contains the melody for the first line, and the subsequent three staves continue the melody.

NEW NOTES!



49. Jolly Old St. Nicholas

not on tape



Jol - ly old St. Nich - o - las, lean your ear this way. Don't you tell a sin - gle soul,



what I'm going to say. Christ - mas eve is com - ing soon, now you dear old man.



Whis - per what you'll bring to me, tell me if you can.



50. My Paddle

not on tape



My pad - dles keen and bright flash - ing with sil - ver Fol - low the wild goose flight dip dp andwing.