



RES FEBRUARY UPDATE

Reach Every Student

Message from Admin:

Dear RES families,

At Raymond Elementary School we believe that education extends beyond textbooks and classrooms. It encompasses the cultivation of values that shape individuals into responsible, empathetic, and resilient members of society.

At RES, we aim to create a nurturing environment that encourages the development of key values such as respect, responsibility, integrity, teamwork and resilience.

We believe in fostering a culture where everyone, regardless of differences, is treated with kindness and respect. Through daily interactions and classroom activities, we will emphasize the importance of empathy, understanding, and appreciation for diversity.

Instilling a sense of responsibility is crucial in preparing our students for the challenges they will face. It is essential to empower our students to take ownership of their actions and contribute positively to their community.

We believe in teaching our students the importance of honesty and integrity. Our curriculum and classroom discussions will provide opportunities for students to explore and understand the ethical implications of their choices.

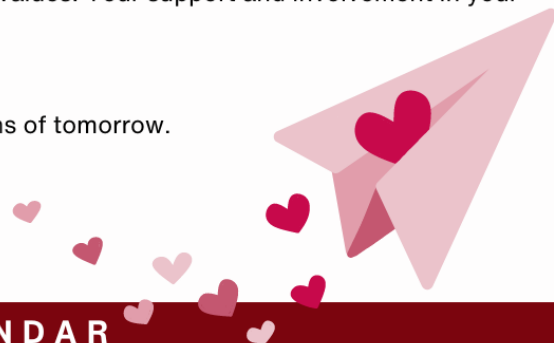
Collaborative skills are essential for success in both academic and real-world settings. Through group activities, projects, and team-building exercises, we will emphasize the value of working together to achieve common goals.

Life is filled with ups and downs, and we want to support our students in developing resiliency and equip them with the ability to bounce back from challenges. Through a growth mindset approach, we will encourage perseverance, adaptability, and a positive outlook in the face of setbacks.

We believe that the partnership between home and school is vital in reinforcing these values. Your support and involvement in your child's education play a crucial role in the development of a well-rounded individual.

Thank you for entrusting us with the privilege of shaping the future leaders and citizens of tomorrow.

Warm Regards,
RES Administration



DATES FOR YOUR CALENDAR

Feb 7 - Burger Baron Hot Lunch (grade 1,3,5)
Feb 8 - Burger Baron Hot Lunch (grade 2,4,6)
Feb 14 - Valentines Day
Feb 14 - 100th Day of School
Feb 14 - Dairy Queen Hot Lunch (grade 1,3,5)
Feb 15 - Dairy Queen Hot Lunch (grade 2,4,6)

Feb 19 - 23 - No School
Feb 26 - School Resumes
Feb 28 - Subway Hot Lunch (grade 1,3,5 & 6)
Feb 29 - Subway Hot Lunch (grade 2,4)
Feb 29 - Grade 5/6 Ski Club Trip
Feb 29 - Pink Shirt Day

